



ARE WE THERE YET?

Griffith City Council's Cultural Plan 2007-2012



Special Thanks and Acknowledgements

Coordination Group Members

Ross O'Shea and Elizabeth Moon from NSW Premiers Department, Jacqueline Brodi and Daniel Desnousse from the Indigenous Coordination Centre, Director Regional Services – Fadel Benhima NSW Community Relations Commission, Peta Dummet Griffith Interagency and Griffith Neighbourhood House, Mayor Dino Zappacosta, Deputy Mayor Peter Fussell, General Manager Peter Brooks, Alison Balind, Anne Garzoli, Andrew Crakanthorp and Councillor Cox, Councillor Napoli and Councillor Stead.

Working Party Members

Representation from: Cr Anne Napoli, Cr Christine Stead, Cr Mike Neville, Cr Pat Cox, Cr Pat Pittavino, Cr Peter Fussell, Big hART, Community Drug Action Team, Creative Riverina Youth Team, Dept Education, Science and Training, Griffith Adult Learning Association, Griffith Centacare, Griffith Chamber of Commerce, Griffith Children's Services Group, Griffith Liquor Accord, Griffith Multicultural Community Council, Griffith Multicultural Youth Partnership Project, Griffith Neighbourhood House, Griffith Police and Community Youth Club, Griffith Ratepayers and Residents Association, Griffith Skills Training Centre, Indigenous Coordination Centre, Interagency Group, Lead-On, Mission Australia, NSW Attorney General Dept, NSW Community Relations Commission, NSW Dept of Community Services, NSW Dept of Corrective Services, Dept of Education – Schools, Dept of Education – TAFE, NSW Dept of Health - Greater Southern Area Health Service, NSW Dept of Housing, NSW Dept of Juvenile Justice, NSW Police Service, NSW Dept of Premier and Cabinet, NSW Dept Sport and Recreation, NSW Dept of Tourism, NSW Dept of State & Regional Development, NSW Ministry of Transport, Riverina Area Consultative Committee, Southern Riverina Youth Support Services, Youth Advisory Board, Youth Off The Streets.



In partnership with NSW Department Premier and Cabinet

© Griffith City Council 2007.

Everyone in Griffith has an interesting story to tell. We have come from all over the world but we still share one thing: our community. We should put all our stories together and paint them, sing them, dance them, wear them...have them on display so everyone can see how proud we are (Henry, 8).

The City of Griffith recognises the Wiradjuri people as traditional custodians of the land on which this city has been built. Griffith exists as a result of the courage and determination of people from many lands who have chosen to make it their home. Although they come from different backgrounds, essentially their aspirations are the same – to live in a community where respect and understanding are paramount. (Mayor Dino Zappacosta)

In the face of increasing globalisation, the notion of place has become an especially important organising element in cultural, social and economic terms. People want to participate in creating meaning and identity. Our community museums, libraries and locally generated cultural activities have an important part to play in this and local government will have an increasingly pivotal role. The creators, the artists - those who continue to challenge, entertain and inspire us - deserve greater recognition and support. The Ministry will focus on improving the creative environment for those whose core business is innovation. (ArtsNSW)

Social impact has been defined as a measure of “the efficacy of arts and cultural participation in achieving other social outcomes” where “arts and cultural activity intersects with other areas of public concern such as education, crime prevention, community identity and development.” (Regional Arts NSW)

Every child is an artist. The problem is how to remain an artist once we grow up. (Pablo Picasso)

Contents

1. Acknowledgement of the Aboriginal and Torres Strait Islander community in Griffith
2. Executive Summary
3. Why have a plan
4. Introduction
5. Arising from the previous Cultural Plan
6. What the community said
7. Arts service mapping
8. Roles
9. Arts and Culture in Griffith
10. Cultural Map
11. Demographic profile
12. Issues and Challenges
13. Introduction to Action Plan
14. Arts and Cultural Strategy (Action Plan)

Tables

1. We will address the priorities through strategies that have
2. corresponding actions
3. Using strengths to address issues to achieve our vision
4. Framework in which the cultural plan sits
5. Strategic framework for arts and cultural development

1. Acknowledgement of the Aboriginal and Torres Strait Islander community in Griffith.

Griffith is located in the heart of the Wiradjuri Nation – the largest nation of Aboriginal and Torres Strait Islander people in Australia. Griffith City Council recognises the position of Aboriginal people in the history and growth of Griffith and its surrounding villages. It acknowledges the Wiradjuri people as the traditional owners of the land and pays respect to Wiradjuri Elders past, present and future.

The Griffith Aboriginal Community Working Party is the peak Aboriginal and Torres Strait Islander representative forum for the Griffith Aboriginal and Torres Strait Islander community. It advocates for the interest of the community, maintains strategic oversight of community development, and negotiates improvement in service delivery and coordination on behalf of the community.

Griffith City Council acknowledges the invaluable contribution and effort of the Aboriginal Community in producing the Aboriginal Social Action Plan (Appendix V). The Plan adds much value to the scope and content of the Griffith Community Action Plan and clearly captures the needs, aspirations and values of the Griffith Aboriginal and Torres Strait Islander community. The alignment of the two plans represents a new direction and ongoing collaboration between the Griffith City Council and Griffith Aboriginal Community. Through our planning and collaborative effort we pledge to work cohesively to meeting the needs of the Aboriginal and Torres Strait Islander community in Griffith – part of Wiradjuri country.

2. Executive summary

Griffith City Council's Cultural Plan 2007-2012 calls upon findings from community consultation and aims to synthesise, coordinate, and improve cultural activity in our community.

Culture encompasses many facets of life. The ABS describes culture as “Ways of life” communicated through practices like song, dance, art, philosophy, religion, fashion, food, work patterns, family relationships, and relationship to land or water or animals. Culture is tradition but it is also dynamic and evolving.

Council acknowledges the diversity of our community, and the opportunities this creates for cultural celebration and Arts practice. Council also recognises the utility of the Arts in addressing other social issues. By celebrating our culture, and expressing ourselves through various creative means, we learn more about ourselves and each other. Such a situation serves to improve cultural understanding, individual and community wellbeing. As with previous Cultural Plans, the 2007-2010 Cultural Plan is viewed by Council as a highly important strategy, and the leading document for guiding Arts and cultural practice in Griffith.

The 2007 – 2012 Cultural Plan has three strategies

S1) To support the Community Action Plan (CAP)

S2) Increase participation in the Arts- in production, audience development and infrastructure

S3) Participate in larger Regional Arts strategy

Through community consultation, the following issues were identified as priorities for Griffith City Council between 2007-2012.

- P1) Safe spaces and better opportunities for young people (S1)
- P2) Crime Prevention (S1)
- P3) Cultural Understanding (S1)
- P4) The future direction of the Art Gallery (S2)
- P5) Participation in the Regional Arts network (S3)

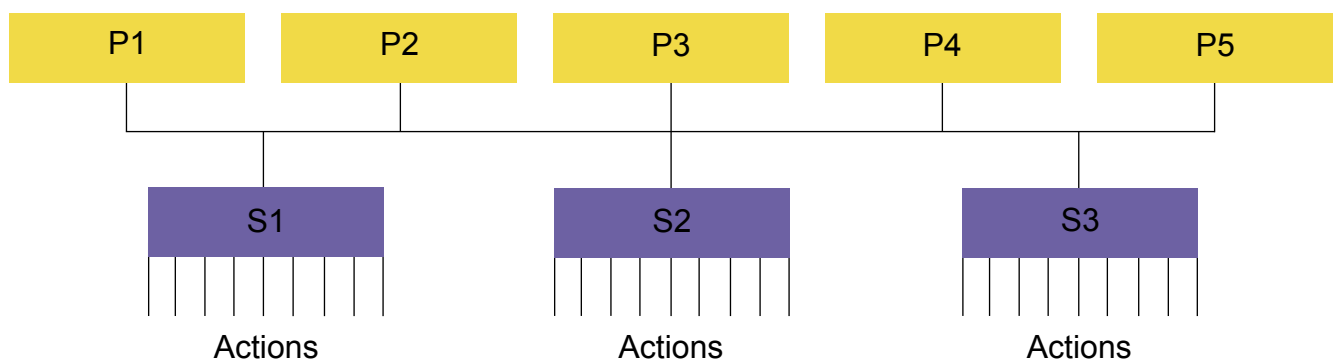
It was also identified that the main gaps for cultural activity in Griffith are:

- Not being part of a RADO network (S3)
- Sustainability of gallery site (S2)
- Audience Development (S2)

These also present as opportunities.

Table 1

Five key priorities will be addressed through three strategies with corresponding actions.



3. Why have a plan?

The Third Cultural Accord of the Local Government and Shire Association details the responsibility of local government in the planning, development and operation of cultural facilities at the local level. The Accord highlights local and regional cultural planning as integral to the establishment of shared priorities for governments and communities, and for the effective integration of State Government support for cultural activity at the community level.

Arts and cultural development contributes to community wellbeing and cohesion, and a sense of identity and social inclusion. It fosters understanding and appreciation of diverse cultures, values and meanings. It enhances our built and natural environments and our awareness of our cultural heritage, and contributes to neighbourhood liveliness. In doing this, it creates a sense of place and belonging.

The arts and cultural sector also makes a significant contribution to the economic life of the city. The professionalism of our cultural industries is a feature of Griffith’s uniqueness and needs to be valued, nurtured, developed and consolidated.

Key Statistics

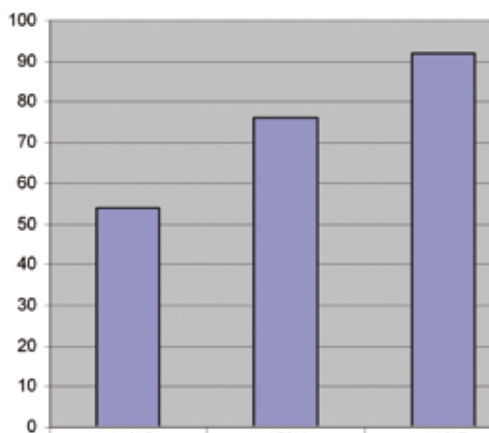
The below statistics merely serve to demonstrate that Cultural Industries have a significant economic position in the life of our City as a value add to their contribution to community wellbeing and arts practice. Like all multi-disciplinary professional industries, adequate and strategic planning is essential to future optimisation, growth and (where appropriate) consolidation. This is what the Cultural Plan aims to do.

Theatre:

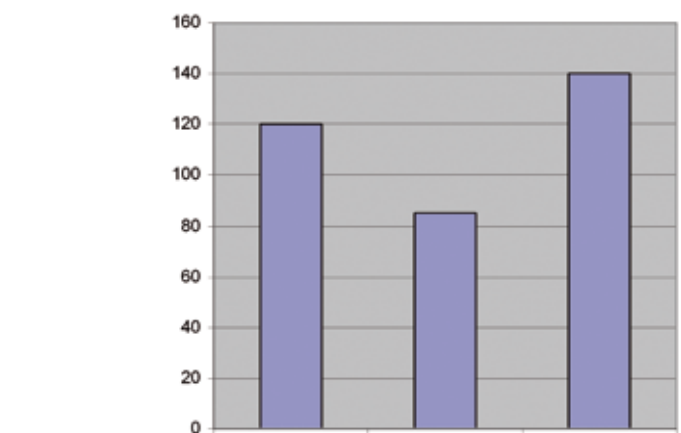
Statistics for 06/07

Ticketed attendance	27,570	up 28.6% (from 05/06)
Overall attendance	37,072	up 20.4% (from 05/06)
Box office revenue	\$480,460	up 54.7% (from 05/06)

Griffith Regional Theatre - Auditorium



Griffith Regional Theatre - Burley Griffin Room



No. of performances

54

76

92

No. of events/sessions

120

85

140

Tourism

Visitors 2006/2007 = 45,609 through the visitors centre (estimate 182,400 to Griffith in total)

La Festa 07 - estimated around 8-9,000 people - worth \$840,000 to the local economy

Festival of Gardens 06 - estimated 2 - 3,000 people - worth \$500,000 to the local economy

Library

	Year#	\$
Circulation for Griffith City Library	2005/06	138,235
	2006/07	141,062
Visitors to Griffith City Library	2005/06	167,353
	2006/07	172,900
Internet usage (people)	2005/06	23,856
	2006/07	29,572

4. Introduction

A Cultural Awakening: Griffith's Cultural Plan expires at the end of 2007, at which point we will make a transition into "Are we there Yet?" Griffith City Council has built upon the issues and successes arising from the implementation of A Cultural Awakening, and conducted further community consultation, to create this Cultural Plan for the next four years.

Relationship of Cultural Plan to the CAP

In addition to being an independent document which guides arts and cultural practice in our community, the Cultural Plan also plays an important supportive role in the implementation of the Community Action Plan (CAP). Through arts and cultural practice, we can use our strengths as a community to address the main social issues we face, and work towards our vision for Griffith.

Community consultation demonstrated that people see Griffith's strengths as including:

- our sense of community,
- multiculturalism,
- family orientation,
- streetscape,
- employment

The main issues for the community included:

- Services and facilities for young people
- Cultural understanding
- Education
- Crime prevention
- Health services and facilities

People's visions for Griffith included:

- Recognition of multiculturalism and culture
- To live in a safe and peaceful community
- Medical and health facilities
- Services and facilities for young people (including a youth centre)
- University

Many of these priorities will be addressed through the Arts and Cultural Plan.

Table 2

Using strengths to address issues to achieve our vision



Relationship of Cultural Plan to other Government Plans and Strategies

The Cultural Plan links to other strategic documents:

- It follows on from the previous Cultural Plan: A Cultural Awakening
- It refers to the Aboriginal Social Action Plan
- It has key local strategic links to the NSW State plan priorities and target areas
- It support the Griffith Community Action Plan

The Process

The Plan is the result of:

- Research including examination of relevant reports, demographic profiles, review of the previous Cultural Plan and service mapping
- Extensive community consultation in determining issues and strategies

Residents, Council representatives and other service providers all contributed to the development of the Plan. The consultation took place during March 2007- July 2007. Approximately 3000 people were involved in the consultation process representing agencies, community groups or individual interests.

Key Methodologies for consultation

- BBQs
- Forums
- 1 on 1
- Email/ web page feedback
- Reporting through events
- Door knocking and surveying residents
- Community meetings
- Library and Kiosk consultations
- Working Party members participation and consultation
- Promotion and publicity

Key statistics

- Over 1500 people were consulted from CALD and ATSI communities
- Over 600 school children were engaged
- Over 200 young people were consulted
- Over 350 surveys were returned
- Over 200 meeting participants (incl. 1 on 1 consultations)
- Over 70 forum attendees
- Over 28 meetings
- 5,000 surveys printed
- Surveys translated into 5 languages

5. Arising from previous cultural plan

Issues outstanding:

Objective	Status
Arts & Cultural Directory	Preliminary work has been undertaken. This is still an important output for the community to support
Formation of an independent arts organisation.	<p>This became less relevant. There have been ongoing negotiations around the establishment of an independent arts organisation. However, community consultation has shown that there are many such groups already in existence.</p> <ul style="list-style-type: none"> o Town band o La festa inc o Big hArt o Italian museum o War Museum o The Griffith Musician Club o as well as many informal groups and section 355 committee's <p>Rather than create more structures, Council undertook a report into regional arts strategy, which sets out a blue print for future cultural planning and engagement</p>
Develop a cultural map as an Arts Directory	Consult with the community, and gather informal and formal information to develop a cultural map, with an arts directory as a component. The map is still in draft form but is included in this document
Develop a Cultural Policy with special attention to the arts	This document is part of developing cultural policy
Develop a Public Spaces Policy	Art in public places policy in development
Erect signs welcoming people to Wiradjuri country	Logo and design of sign completed, currently waiting for branding to be done. Expected to be erected by April 08.
Develop Communications strategy as a part of Community Consultation Policy	Draft communication strategy developed and under review

Develop a register of local artists.	In draft
Conduct feasibility study into arts precincts undertaken with a view to establishing community arts studio	Planning is ongoing. However, the Gallery and a Multi-Purpose centre is now on the agenda through <ul style="list-style-type: none"> • Community Action Plan • Strategic Review of the Griffith Regional Art Gallery
Lobby State government and Regional Arts NSW with a view to creating a new RAB (regional arts board) region which will incorporate Griffith and surrounding towns. This will enable development of community arts at a strategic level. Planning for this is ongoing	Ongoing, with meetings and visits from key staff at Arts NSW and Regional Arts NSW and NSW Minister for the Arts, Frank Sartor

6. What the community said

- Picture my World to run every year.
- Run a Living Libraries project.
- Schools to put more emphasis on importance of art.
- Mini-golf, paddle boats on the lake, archery.
- More entertainment.
- Community Newsletters.
- Community activities.
- Community performances.
- Engage with youth and young people to celebrate their culture.
- Projects to enhance cultural engagement, e.g. Picture my World, Breaking New Ground, Garribarri Festivals, Sikh games, La Festa, Multicultural Youth Partnership Project, KOOL.
- Language Facilities.
- Increase adult and long life learning options which are affordable.
- More free art programs for children and young people.
- The challenge: getting accessibility & inclusiveness of as many young people as possible.
- Encourage more busking and street art. Get more people to the art gallery, theatre, pioneer park, library, visitor's centre.
- There is a gap in recreational activities for children 8-12 years and then 15-18 years that is central, accessible, affordable, time appropriate, has adequate supervision/mentoring.
- Provide one stop shop to provide recreational and support space.
- More public art.
- Meeting place for teenagers.
- Develop a multi-purpose community centre.

- Acquire youth friendly building in central position with outdoor space.
- Utilise the skills of local artists that exhibit at the art gallery in a series of sustainable workshops for young people.
- More free art programs for children and young people, for example, at the art gallery.
- More free sports programs for children and young people.
- More Picture my World and art workshops.
- Youth Theatre.
- Education programs on cultural issues.
- Discos- PCYC.
- Variety nights- Theatre.
- Band days- Pool.
- Skate Competitions.
- Youth activities - concerts.
- Art programs to promote respect and community harmony.
- Promote integration.
- Promote tolerance.
- More material shops to create culturally important clothing.
- Art work to celebrate difference and diversity- this is within the main shopping area- not hidden on the hill.
- Community performances - held regularly in the main shopping area, not necessarily linked to special one off festivals.
- Could also become an added attraction for visitors.
- Discussions about the value of diversity and what it brings to our society.
- Street theatre to explain the history of development and migration to this area.
- Art programs to promote respect and community harmony.
- More lifecycle sculptures.

Table 3

Framework in which Cultural Plan sits

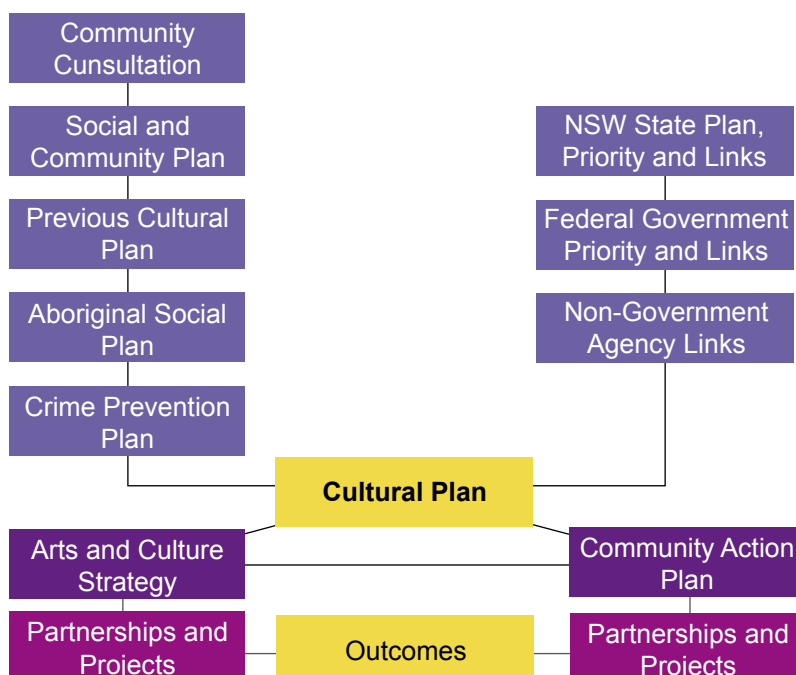
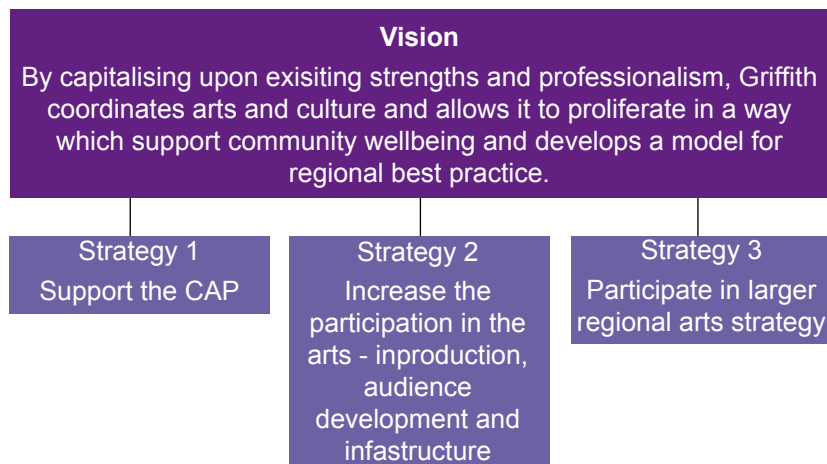


Table 4

Strategic framework for arts and cultural development in Griffith



7. Arts Service Mapping – Council Context in relation to the Community Action Plan

This identifies Griffith City Council's current Arts and Cultural projects, community partnerships, facilities and activities against key community issues. These community issues were identified by the 3 working parties in their development of the consultation frame work and development of the Community Action Plan.

Issue	Strategy	Action
Places and Spaces for young people	Provide facilities, spaces, and programs that young people will want to visit, will feel part of.	<p>Gallery</p> <ul style="list-style-type: none"> · Provide opportunities for young people to participate in exhibitions, workshops and events. · Free entry · Programming that reflects the interest of young people as well as other sections of the community. · Youth friendly staff · Couches to sit down and relax on · Big hART exhibition <p>Theatre</p> <ul style="list-style-type: none"> · Provide opportunities for young people through programming, workshops and events. · Ensuring a competitively priced admission fee for all audiences under 20 · Actively encourage and support the use of the theatre by young people and youth organisations. · Big hART gold project <p>CRYT</p> <ul style="list-style-type: none"> · Annual calendar of free, safe, well-advertised, accessible youth-focused events. · Actively support partnerships that provide YP with safe, accessible, free and age appropriate events. · Provide YP with free access to a youth friendly meeting space (CRYT office), event venues and public spaces. · Provide access to equipment, resource, staff and infrastructure to make projects and events possible at various venues and spaces in Griffith. · Provide free food and drinks at all meetings and CRYT events. <p>Visitor's Centre</p> <ul style="list-style-type: none"> · GPS Treasure Hunt to encourage young people to explore the city and gain orienteering skills · Provide free access to general and specific information relating to events and happenings in Griffith. · VC staff provide logistical support to YAK stage <p>Pioneer Park</p> <ul style="list-style-type: none"> · Schools Activity Day · Traveling Exhibitions

		<p>Library</p> <ul style="list-style-type: none"> · Extensive selection of Books, magazines, information material, DVDs, CDs, and IT services to suit the whole family. · Free movies · Free monthly BBQ · Youth week events at the library · Public internet at the library · Communal meeting place at the library
<p>Support for families</p>	<p>Provide facilities, spaces, and programs that allow families to feel comfortable and welcome and meet the needs of families.</p>	<p>Gallery</p> <ul style="list-style-type: none"> · Free entry · Exhibitions · Couches to sit down and relax · Have a family day at the gallery one weekend with workshops in painting and jewellery making for children <p>Theatre</p> <ul style="list-style-type: none"> · Programming for young people and families · Family friendly pricing structures · Comfortable and welcoming pre-theatre spaces · Develop a stand alone program for young people and families <p>Visitor's Centre</p> <ul style="list-style-type: none"> · Kits to assist families moving to Griffith to find services and resources to cater for their needs · GPS Treasure Hunt to encourage young people to explore the city and gain orienteering skills · Provide free access to general and specific information relating to events and happenings in Griffith. · Provide a welcoming and comfortable place for families to visit to find out about Griffith. <p>Library</p> <ul style="list-style-type: none"> · Extensive selection of Books, magazines, information material, DVDs, CDs, and IT services to suit the whole family. · "Baby Bounce" Infant program to develop parenting skills and babies' cognitive development · Toddler's story time held weekly

		<p>Pioneer Park</p> <ul style="list-style-type: none"> · Season ticket for all year round access · Safe and secure environment for playgroup · Natural bush setting for education and recreation · Continue to encourage community organisation to base them selves at the museum e.g. Play groups, U3A, Arts group
<p>Trans- port</p>	<p>Provide and/ or advocate for transport opportunities that enable people to access arts and cultural events and facilities.</p>	<p>Gallery</p> <ul style="list-style-type: none"> · Source funding to assist groups in the cost <p>Theatre</p> <ul style="list-style-type: none"> · ConnectEd funding (\$10,000) obtained to subsidise transport for schools attending theatre <p>CRYT</p> <ul style="list-style-type: none"> · Free bus for YP to and from most events. <p>Visitor's Centre</p> <ul style="list-style-type: none"> · Operations of the coach terminal ensuring opening times and asset maintained & utilised <p>Library</p> <ul style="list-style-type: none"> · Apply for funding to support schools to better engage with the Theatre by subsidising transport through a state project called ConnectEd
<p>Cultural Under- standing</p>	<p>Programs that support and foster cultural awareness, acceptance and respect.</p>	<p>Gallery</p> <ul style="list-style-type: none"> · Develop, source and/or present exhibitions, projects and events that reflect and support cultural diversity. <p>Theatre</p> <ul style="list-style-type: none"> · Ensure programming reflects and supports diverse cultural content, ideas and images <p>CRYT</p> <ul style="list-style-type: none"> · Development of a funded initiative called vYa (visible youth action) CRYT aimed at providing youth driven solutions to issues of Boredom, Access, Safety and Racism. · Calendar of events and partnership projects which reflect diverse local cultural content, through links with cultural groups. <p>E.g. YAK stage, Now showing, International Youth day, Breaking New Ground, WYK, Picture My World.</p>

<p>Crime Prevention</p>	<p>Promote and advocate the role of cultural facilities and programs, arts and entertainment in building social capital</p>	<p>Pioneer Park</p> <ul style="list-style-type: none"> · Hosts Festa Delle Salsiccie · Action Day · School Day <p>Visitor's Centre</p> <ul style="list-style-type: none"> · La Festa · Griffith DVD in Mandarin & Italian. Information sheets on Griffith in Mandarin and soon to be Italian <p>Library</p> <ul style="list-style-type: none"> · Reading/viewing material available at the library in any language for free · Provide Venue for other cultural groups
		<p>Theatre</p> <ul style="list-style-type: none"> · Develop partner relationships with organisations such as CRYT, Lead On, KOOL and Big hAart that provide entertainment and arts practice opportunities for young people, including those identified as being 'at risk' and/or marginalised in the Griffith community. <p>Gallery</p> <ul style="list-style-type: none"> · Develop partner relationships with organisations such as CRYT, Lead On, KOOL and Big hAart that provide entertainment and arts practice opportunities for young people, including those identified as being 'at risk' and/or marginalised in the Griffith community. <p>Library</p> <ul style="list-style-type: none"> · Extensive range of recourses, program activities and support to ensure access and equity within the community. · Provide free and accessible space for community members to meet. <p>CRYT</p> <ul style="list-style-type: none"> · Development of a funded initiative called vYa (visible youth action) CRYT aimed at providing youth driven solutions to issues of Boredom, Access, Safety and Racism. · Calendar of events and partnership projects which reflect diverse local cultural content. E.g. YAK stage, Now showing, International Youth day, Breaking New Ground, WYK, Picture My World. · Ongoing youth engagement and community connection building through regular events, project opportunities and community based partnerships and resource sharing.

		<p>Library</p> <ul style="list-style-type: none"> · Provide free and equitable access to a range of resources and programs including arts and entertainment. E.g. visiting authors, exhibition space, free movies etc. · Provide a safe, central and free meeting place for community members.
<p>Edu- cation</p>	<p>Create connections between the education sector and the program presented by the facilities</p>	<p>Gallery</p> <ul style="list-style-type: none"> · Develop an education program for each exhibition <p>Theatre</p> <ul style="list-style-type: none"> · Form an advisory group of representatives from local schools · Develop an education program from within the entrepreneurial season <p>CRYT</p> <ul style="list-style-type: none"> · Connections with local high schools · Skill workshops · Education through participation in CRYT processes <p>Pioneer Park</p> <ul style="list-style-type: none"> · School trips · Collection an educational resource · Update education package in consultation with schools <p>Library</p> <ul style="list-style-type: none"> · Relevant and up to date resource collection at the library · Access to information via the internet
<p>Employ- ment</p>	<p>Develop connections with secondary and tertiary education sector promoting the</p>	<p>Theatre</p> <ul style="list-style-type: none"> · Provide VET work placement opportunities at the theatre · Provide resources and facilities to enhance school courses and training opportunities <p>CRYT</p> <ul style="list-style-type: none"> · Skills development workshops in arts and media industry. · Transferable skills gained through participation in CRYT projects, events and meetings.

	<p>role of the arts in gainful employment</p>	<ul style="list-style-type: none"> · VET work placements in partnership with Lead On and GRADVET. Pioneer Park · Backpacker accommodation for seasonal workers Visitor's centre · Distribution and maintenance of information sheets on Employment agencies within Griffith. Continuous updates provided through the Harvest Employment to assist backpackers with employment opportunities.
<p>Mental Health service Health/ hospital services</p>	<p>Promote the role of the arts in community well being</p>	<p>All of the Councils facilities and associated programs</p> <p>View the arts and cultural activities as essential and holistic aspect a community's wellbeing. This includes the positive role that it plays in personal health and wellbeing.</p> <p>This view is reflected in the value placed on promoting all of Griffith's arts and cultural facilities and programs and also in the support that is given to organisations and projects that are focused on Mental Health and other health related issues.</p> <p>E.g. Use of the library to Launch community health programs such as 'Good Tucker Better Health' cook book.</p> <p>The Galleries support and promotion of exhibitions related to health issues.</p>
<p>Poverty</p>	<p>Provide Facilities and programs that support access and equity principles for all.</p>	<p>Gallery</p> <ul style="list-style-type: none"> · Free entry · Free workshops and events <p>Theatre</p> <ul style="list-style-type: none"> · Commitment to affordable ticketing and free performances when ever possible. <p>E.g. Free movies shown monthly, Free performances as part of TAP. (Theatre Access Program), subsidized tickets for select shows.</p> <ul style="list-style-type: none"> · Theatre Access Program. Enabling free and/or subsidized access to professional support for performers and artist. · Community access scheme: Community members may apply for a subsidy on the cost of using the Theatres facilities. · Partnership with Big hART's gold project

		<p>CRYT</p> <ul style="list-style-type: none"> · Development of a funded initiative called vYa (visible youth action) CRYT aimed at providing youth driven solutions to issues of Boredom, Access, Safety and Racism. · All events are free and free food is available at every event. · Free bus transport is provided at most CRYT events.
<p>Other: A place for seniors</p>	<p>Provide facilities and programming that is accessible affordable and relevant to seniors</p>	<p>Gallery</p> <ul style="list-style-type: none"> · 'Morning for Seniors' events · Guided tours by gallery staff or by artists <p>Theatre</p> <ul style="list-style-type: none"> · Continue to develop the Mid Morning Matinee series · Discounted and subsidized tickets for select performances. <p>Library</p> <ul style="list-style-type: none"> · free movie screening · knit in · mobile library for housebound · seniors discussion groups at the library · seniors computing skills · 2006 NSW Cultural Award winners for services to seniors.
<p>Volunteers</p>	<p>Provide opportunities for Volunteers to contribute to arts and cultural events, facilities and programs.</p>	<p>Gallery</p> <ul style="list-style-type: none"> · Volunteer register for front desk support. · Strong involvement at Advisory Board and Friends of the Gallery level. <p>Theatre</p> <ul style="list-style-type: none"> · Strong involvement at Advisory Board level. <p>Pioneer Park</p> <ul style="list-style-type: none"> · Encourage new volunteers to become part of an active team and to support volunteers to learn new skills; provide opportunities for social interaction, and foster pride in community facilities

		<p>Visitors Centre</p> <ul style="list-style-type: none"> • Involves volunteers to share their local knowledge and experience as tour guides for visiting groups. E.g. Garden Festival
--	--	---

8. Roles

An All-of-Council Approach

Griffith City Council will adopt an all-of-Council approach to implement this plan. An “all-of-Council” approach means working across a number of different Council departments. This will involve:

- Raising the profile of arts and culture in Council's strategic documents, events and promotional materials;
- Increasing the impact of Arts and Cultural programs through a coordinated
- response to arts and cultural planning across Council Units and Branches; and
- Ensuring all of Council's key strategies acknowledge the importance of local arts and culture and its requirements.

9. Art and Culture in the city of Griffith

Historical Context

Wiradjuri people have lived in the areas known as the City of Griffith since the beginning of time. Archeological evidence and historical accounts identify Griffith as having been an important trade route and meeting place for aboriginal people for thousands of years. Griffith continues to be a significant place for Wiradjuri and other aboriginal people who live in the Riverina Region.

Griffith is unique in that its creation, design, and purpose have all been carefully planned. In 1912, after the extensive construction of irrigation canals and channels, the tap was turned on and Griffith as a town was born. Griffith grew as soldier settlers and European/ Italian immigrants came to work the land and make a life here. Over Griffith's short history, other significant communities that have formed include South Pacific Islander, Turkish, Indian, and Afghani communities. All have overcome the difficulty of migration to become valued members of our city.

Griffith is a planned and designed city with a distinctive built heritage where the contribution made by Walter Burley Griffin is celebrated and protected. The city's heritage streetscapes, parks and gardens contribute to the city's distinctiveness as does the growing collection of public art and design works.

Griffith is a young city with a proud heritage. Being young is seen not as a downfall, but as an opportunity to shape ourselves into a progressive, professional community.

Regional Context

In terms of arts and cultural practice, Griffith is building stronger arts development connections into the region and is modelling new ways to ensure cultural vitality is attracting broad, national interest. Cultural diversity sets Griffith apart from other towns in the region, and as such has much to contribute to the arts and cultural sector. Griffith is now well-placed to extend its cultural planning and program focus to the wider region.

Regional Facilities and projects include TAP, WYK, La Festa, Big hART, YAK stage, CRYT and Cottage Gallery.

Local Arts and Culture

Griffith, with its diverse cultures, unique experiences, and talent, has the potential to become a thriving, professional cultural hub. Already there is a great mix of arts and cultural practice. The challenge now is to coordinate and professionalise this.

As a city we are fortunate enough to have Aboriginal and non-Aboriginal, CALD and non CALD people. There are talented singers, dancers, painters, sculptors, actors, cooks, designers, film-makers, writers and other artists. Just as important as these people are the audiences we have that soak up and enjoy the arts and culture.

The past five years have seen a cultural awakening in Griffith. The city has built on its rich cultural traditions to firmly establish itself as a significant regional cultural centre where new models of regional arts development are being tested and rolled-out with direct benefits to the local residents as well as to visitors. The city's strategic approach to program and facility management is underpinned by a commitment to consultation and collaboration across government and with the local and regional community. It has been successful in attracting innovative and high profile Community and cultural development practice to the city.

What makes Griffith unique?

- Griffith's traditional owners are the Wiradjuri people who have lived in the area for Tens of thousands of years and maintain a proud cultural heritage
- Our remarkable mix of cultures- more than seventy language groups
- Irrigation and farming
- The orange sculptures
- Wineries and industry
- Exceptional food and wine
- Designed by Walter Burley Griffin
- Open spaces and fresh air
- Being cosmopolitan despite being isolated and regional
- No traffic lights
- Hermit Cave heritage listing
- Strong Italian Heritage
- Gardens
- Al Fresco dining and cosmopolitan lifestyle

10. Cultural Map (this is not exhaustive and will be continually updated)

Aim of the Cultural Map

To create a comprehensive document this showcases the depth and diversity of Griffith's cultural scene and provides concise and relevant information on how to get amongst it. It should be accessible, easy to follow, and include all facets of cultural activity, as defined below. It should also be a living ever changing document.

Definition of Culture

Culture is:

- “Ways of life” communicated through practices like: song, dance, art, philosophy, religion, fashion and food, work patterns, family relationships, relationship to land or water or animals, types of social gatherings.
- Both tradition and changing.
- Heritage: places, things or groups with historic, aesthetic, environmental or social significance.
- Found in many stages: creation, manufacturing, presentation etc.

Council Cultural Facilities

- Griffith Regional Art Gallery
167-185 Banna Ave
(PO Box 1076)
GRIFFITH NSW 2680
Ph. 02 6962 5991
Fax. 02 6962 6119
Email: gallery@griffith.nsw.gov.au
- Griffith Regional Theatre
1 Neville Place
(PO Box 2283)
Griffith NSW 2680
Ph. 02 69618388
Fax. 02 69618260
Email: theatre@griffith.nsw.gov.au
- Pioneer Park Museum including Italian Museum ☐
Remembrance Drive
(P.O. Box 1035)
GRIFFITH NSW 2680
Ph. 02 6962 4196
Fax. 02 6964 2815
Manager: Darrell Collins 0412 787 846
Email: Darrell.Collins@griffith.nsw.gov.au
- Griffith City Library
233-237 Banna Avenue
PO Box 807
Griffith NSW 2680
Phone: 02 6962 2515
Fax: 02 6964 1422
Email: library@griffith.nsw.gov.au
- Griffith Visitors Centre
Cnr Banna & Jondaryan Ave
(PO Box 126)
GRIFFITH NSW 2680
Ph. 02 6962 4145 Fax. 02 6962 7319
Email: griffithvc@griffith.nsw.gov.au
Toll Free: 1800 681 141

Cultural Projects

- Youth Advisory board (YAB)
- Multicultural and Migrant Settlement Services
- Creative Riverina Youth Team (CRYT)
- Breaking New Ground
- Picture My World

Council Cultural Committees

- Australia Day Committee
- CBD Redevelopment Committee
- Bicycle Plan Advisory Committee
- Festival of Gardens Subcommittee
- Griffith Migrant Settlement Services Committee
- Griffith regional Art gallery Committee
- Heritage Management Committee
- Riverina Regional Tourism Committee
- Theatre Management Committee
- Tourism Advisory Committee
- Western Riverina Community Library Committee
- Yenda Pool Investigation Committee
- Built Environment Committee

Cultural facility support groups

- Friends of the Griffith Regional Art Gallery
PO Box 1076
Griffith NSW 2680
Ph: 0269 625991
Fax: 0269 626119
Primary Contact: Maureen Parker (0269 621688)
Secondary Contact: Joy Grinly (0269 623382)
- Friends of the Griffith Regional Theatre
1 Neville Place
(PO Box 2283)
Griffith NSW 2680
Ph. 02 69618388
Fax. 02 69618260
Email: theatre@griffith.nsw.gov.au

Performance Arts

- Griffith & Regional Association of the Performing Arts (GRAPA)
PO Box 2292
Griffith NSW 2680
Ph: 0269 635478
Fax: 0269 618340
Email: grapa2001@hotmail.com
Primary Contact: Peter Fordham (0269 625945)

- Theatre Arts Project (TAP)
1 Neville Place
(PO Box 2283)
Griffith NSW 2680
Ph. 02 69618388
Fax. 02 69618260
Email: theatre@griffith.nsw.gov.au

- Big hART
Shop 427 Banna Ave
Ph. 69646645
Email: chrissaunders@iprimus.com.au
Web: www.au.org.au

Dance Academy / Groups

- Di Salvatore
- Melissa's Dance Studio
- Bootscooting
- Dolly's
- Lead On
Shop2/Level1,130-140
Banna Avenue GRIFFITH 2680
Phone: 0269625111
Fax: 02 6962 5455
Contact: Andy Heaney
Email: griffith@leadon.com.au

Framing

- Griffith Prints and Framing
123 Banna Ave
Griffith NSW 2680
Ph: 69645100
- Riverina Framers Corner ☐
500 Banna Ave
Griffith NSW 2680
Ph: 69640104
- Griffith Art and Framing
Ph: 69645100

Media Production

- Therefore Equals Nothing Magazine
Lead On Griffith
Ph: 69625111
- CreARTivity newsletter
Griffith City Council
Contact: Di Pellizzer
- CRYT newsletters
Contact: Kate McGreal
Ph: 69629940
Kate.McGreal@griffith.nsw.gov.au
- E-alert theatre
Ph: 6961 8388
Email: theatre@griffith.nsw.gov.au

Film

- Griffith Regional Theatre Film Season
Ph. 02 69618388
Email: theatre@griffith.nsw.gov.au
- CRYT Film Season
Contact: Kate McGreal
Ph: 69629940
Email: Kate.McGreal@griffith.nsw.gov.au
- Griffith Great Film Group
PO Box 1775
Griffith NSW 2680
Ph: 0269 630815
Fax: 0269 630801
Primary Contact: Lucy Kealey
- Griffith City Cinemas
Shop 1 Griffith Hometown centre
Phone: 69643102
Web: www.griffithcinemas.com.au

Architects and Designers

- Budd & Partners
43 Carathool St
Griffith NSW 2680
Ph: 69641459
- Steven Murray
Kendall Lane
Griffith NSW 2680
Ph: 69630023
- Sherene and Grant Blumer
12 Whitton St
Griffith NSW 2680
Ph: 69644465
- Mick Fallon
35 Bringagee St
Griffith NSW 2680
Ph: 69622168
- Frank Tabotta
9 Doongara St
Griffith NSW 2680
Ph: 69644120
- Computerised Technical Drawing Services
PO Box 2441
Griffith NSW 2680
Ph: 69641339
- Interior Designers
Interiors by George
17c Battista St
Griffith NSW 2680
Ph: 69621484

Music

- Custom Music
107a Banna Ave
Griffith NSW 2680
Ph: 69622843
- Lead On Griffith
Shop2/Level1,
130-140 Banna Avenue
GRIFFITH,2680
Phone:0269625111
Fax: 02 6962 5455
Contact: Andy Heaney

- Griffith Musicians' Club
1104 Oakes Road
Griffith NSW 2680
Ph: 0269 644614
Primary Contact: Joe Staltare

• Rat House Studios

Photography

- Marie's Photographics
Upstairs, 423 Banna Ave
Griffith NSW 2680
Ph: 69644622
- Garry Bazzacco
11 Rhoda Pl Yoogali
Ph: 69642828
- Lee's Photographics
Ph: 69651181
- Sue Quarisa
Ph: 02 6962 5449

Art Supplies

- A Country Yarn
168 Yambil St
Griffith NSW 2680
Ph: 69647755
- Riverina Framers ✕
500 Banna Ave
Contact: Jeff Wright
- Happy Scrapper
Shop 3/ 20 Banna Ave
Griffith NSW 2680
Ph: 69647400
- Fabric 23
119 Yambil St
Griffith NSW 2680
Ph: 69645523
- Salvo's Art Supplies ✕
Yambil St Griffith
69623978

Galleries

- The Griffith Cottage Gallery
Cnr. Bridge and Leeton Roads,
Griffith , N.S.W 2680
Ph: 69625512
- Griffith Regional Art Gallery
167-185 Banna Ave
(PO Box 1076)
GRIFFITH NSW 2680
Ph. 02 6962 5991
Fax. 02 6962 6119

Public Art in Griffith

- Cornucopia
- Mosaic Wall at Griffith Ex-servicemen's Club¹
- Stained Glass Window, Fairey Firefly Memorial, Dethridge Wheel memorial at Visitors Centre*
- CWA Park*
- Griffith Regional Art Gallery Water Sculpture*
- Griffith City Library Mural*
- Soldier Settler's Memorial*
- Memorial Gardens and Cenotaph*
- Griffith Court House*
- Art Deco Buildings*
- Memorial to Pioneer women*
- Nancy Blumer Memorial*
- Griffith Regional Theatre Public Art works and Soft Sculptured Curtain*
- Mural in Commonwealth Bank*
- Community gardens and Burley Griffin Bridge*
- Orange Sculptures

Heritage and Archaeology

- Groups/Organisations
Genealogical society
Ph: 69648942
ggahs@dragnet.com.au
- Publications
Wiradjuri Youth Kulture (WYK) exhibition research document
- Important Places
Warrangesda Mission and the Common (Darlington Point)
Barren Box Swamp (aboriginal artifacts)

¹ Part of the Uptown Griffith Cultural Walk

- Top 10 Heritage sites (CBD)
 - Battaglia shops
 - State Bank House ☒
 - Railway Station ☒
 - Mackay's Furniture Building
 - Plane on a Stick ☒
 - Lyceum Theatre
 - Ambulance Station
 - Memorial Hall
 - Nancy Blumer Memorial
 - Police Station

- Top 10 Heritage sites (non CBD)
 - Three Ways Bridge
 - Brick incinerator
 - Old quarry, north Griffith
 - Hermits Cave
 - Binya St Houses
 - Pioneer Park
 - Scenic Hill

Festivals

- La Festa
- Youth Arts Kulture (YAK) Stage
- Festa Delle Salsicce (Festival of the Sausage)
- Festival of the Gardens
- Pioneer Part Sight and Sound Tour
- Pioneer Park Action Day
- UnWINEd
- Sikh Games
- Summerset
- Australia Day
- Harmony Day
- Afghan Celebrations- Ramadan.
- Garaburri

Education

- Griffith Adult Learning Association (GALA)
 - Art classes
 - Jeff Wright - Painting with Oils & Drawing
 - Jennie Foster - Oil painting, Drawing and Life Drawing
 - Di Tarr - Mosaic
 - Annette Chauncy - Water colour painting

- Cookery
 - Indian
- Language
 - French
 - Italian
 - Dutch
- Human Movement
 - Yoga
 - Belly Dancing
- Koori Outreach Options for Learning (KOOL)
- TAFE
- Studio/Private classes
 - Jenny Forster - Mixed media
- Cottage Gallery ☞
Cnr. Bridge and Leeton Roads,
Griffith , N.S.W 2680
69625512
- CRYT Workshops
Contact: Kate McGreal
Ph: 69629940
 - Digital Storytelling
 - Metroscreen
 - Soundscape
 - Drumming
 - Recording
 - Krumping
- Theatre based workshops ☞
 - Dramarama
- University of the third age (U3A)
PO Box 2083
Griffith NSW 2680
Primary Contact: Noel Hicks

Venues (halls etc.)

- Senior Citizens Hall
- CWA Hall
- Memorial Hall (pink one)
- Griffith Scout Association Hall
- Anglican Parish Hall
- St Mary's Hall
- Binya Hall
- Hanwood Church Hall
- RSL Memorial Hall
- Woodside Hall
- Yenda Memorial Youth Association Hall
- School halls (contact for details)
- Griffith North Public School
- Griffith East Public School
- Griffith Public School
- Griffith High School
- Marian Catholic College
- Wade High School

Open spaces/ Countryside recreation

- Lake Wyangan
- Memorial Park
- The Canal/Willow Park
- Community Gardens
- Cocoparra National Park
- Murrumbidgee River
- Scenic Hill
- Parks
 - Alexandra park
 - Apex park
 - Beilby Park
 - Binguie Park
 - Brolga Park
 - Circle Park
 - Coates Park
 - CWA Park
 - Don Best Park
 - Dunbar park

- Enticknap Park
- Father O’Dea park
- French park
- Haines park
- Henderson park
- Ieraci Park
- IOOF Park
- Jacka park
- Jessie Farrell Park
- Jiggins park
- Kinkead Park
- Kookora Park
- Kookora St Park
- Kooragee Park
- Kubank park
- Ledgerwood Park
- Lindsey Coon Park
- Lions Park
- Mallinson Park
- Manser Park
- Marcus Park
- McIvor park
- McKirdy park
- Meggitt Park
- Messner Park
- Noel Hogan park
- Nora Gibbons park
- Olympic Park
- Ortella Park
- Peisley Park
- Perre park
- Restyn Park
- Robb park
- Rotary park
- Rowley park
- Rumble park
- Ryan Park
- Vaughan park
- Venetian Park
- Wade park
- Willow Park
- Women’s Land Army Park
- Wood Park

The Environment

- Significant trees
 - Wade St Park - Lemon Scented Gum
 - Aboriginal scarred trees, and also trees which were marked by surveyors.
 - Griffith Local Aboriginal Lands Council
- National parks

Children play (parks, story time, fetes)

- Western Riverina Community Library Story time
- Pioneer Park Museum
- Theatre Season
- Griffith Regional Aquatic Leisure Centre
- Parks (see above)
- Fetes
 - Griffith North Public School
 - Sacred Heart Parish Fete
 - Anglican Church Fete
 - Uniting Church fete

Attractions

- Hermits Cave
- La Festa ☐
- Youth Arts Kulture (YAK) Stage ☐
- Festa Delle Salsicce (Festival of the Sausage) ☐
- Festival of the Gardens
- Pioneer Park ☐
- UnWINEd festival
- Wineries
- Riverina Grove
- Catania Fruit Farm
- Specialist Groceries
 - Italian
 - Indian
 - Islander

Policy development

- Cultural Policy
- Regional Arts Membership Study
- Art in Public Places
- Access and Equity Policy

Creative Producers with Council

- Kristy Brown (Emerging Artist 2006- 2007)
- Kate McGreal (Creative Producer – 2007)
- Scott Howie (Creative Producer, Regional Theatre)

Stories

- DVDs
 - Local Studies – Griffith City Library
 - KOOL
 - CRYT
 - WYK
 - YAK
- Digital Storytelling
- Audio
- WYK Audio CD
- Written (thru lifecycle and cryt, other consultations)
- An invitation Griffith
- Migration Heritage Project
- Story gathering
 - Storylines project

Ethnicity/Language

ABS statistics indicate there are some 25 non-English speaking nationalities represented in the population. However, anecdotal information suggests that there are in excess of 70 first languages and 40 settled communities.

- Afghanistan
- Albania
- Argentina
- Austria
- Belgium
- Brazil
- Bulgaria
- Cambodia
- Canada
- Chile
- China
- Cook Islands
- Christmas Island

- Croatia
- Denmark
- Egypt
- El Salvador
- Ethiopia
- Fiji
- Finland
- France
- French Polynesia
- Germany
- Greece
- Guatemala
- Hong Kong
- India
- Indonesia
- Iran
- Iraq
- Ireland
- Israel
- Italy
- Japan
- Kiribati
- Laos
- Lebanon
- Macedonia
- Malaysia
- Malta
- Nepal
- Netherlands
- New Zealand
- Niue
- Norway
- Pakistan
- Papua New Guinea
- Paraguay
- Philippines
- Poland
- Romania
- Serbia/ Montenegro
- Slovenia
- South Africa
- Spain
- Sri Lanka
- Sudan
- Sweden
- Switzerland
- Tanzania
- Thailand
- Tonga
- Turkey
- UK
- US
- Uruguay
- Vanuatu
- Vietnam
- Western Samoa
- Wiradjuri
- Zimbabwe

11. Demographic profile

Who are we?

At the time of endorsement of the Community Action Plan, the Australian Bureau of Statistics had only made its second release of data. The full complement of data will be retrospectively included into the CAP with the relevant local and regional data.

Griffith is based in the Wiradjuri Nation and has a rich and complex Aboriginal history and important place in the community's future.

Griffith City Council is in the Murrumbidgee Irrigation Area (MIA) and covers an area of 1640 square kilometres. The area relies on a system of artificial canals, weirs and channels from the Murrumbidgee River to feed irrigation water into the semi arid plains. As a result, agricultural and horticultural industries play a key role in the economy. Key industries include rice growing, wine production and fruit and vegetables. Bartter Enterprises and Casella Wines are large employers in the Griffith LGA.

Griffith is home to a range of local, regional and state government organisations providing services to the area. As a key service centre for the surrounding Shires, Griffith attracts many people to its facilities such as shopping, banking, health and other professional services. However, like many other country communities across Australia, the growth and development of Griffith is affected by the disadvantage experienced by rural communities. This includes increasing regionalisation of services and the resulting loss of local infrastructure. One of the growing and imminent concerns is the effects of the ongoing drought and issues relating to climate change. The social and economic and environmental impacts of the shortage of water to a horticultural/agribusiness can not be under scored.

Since the previous ABS release, Griffith has undergone further development, with ongoing residential and commercial development (e.g Griffith Central, Homecentre, Neo-Collina etc), and an ongoing increase in migrant settlement – particularly in the area of skill-migration and family sponsorship.

However, according to the ABS there is no statistical rise in the population of the Local Government Area.

Griffith is noted for its cultural diversity, with a higher than average number of people of European descent, primarily Italian. Other significant population groups include South Pacific Islanders (for example Fijian, Cooke Islander, Tongans and Samoans), and people from India, Pakistan, Turkey, Afghanistan, Iran, Iraq.

Griffith has welcomed migrants and asylum seekers. ABS statistics indicate there are 25 non-English speaking nationalities represented in the population. However anecdotal information from the Settlement Services Office suggests that there are in excess of 70 first languages and 40 settled communities.

The area has many young families with children, 49.7% of families are couples with children (national average 43.7%), while single-parent families make up 13.6% compared with national average 15.8%. Children under 14 comprise 23.3% of the population (National 19.8%). The population's median age is 33 years.

Community Profile and Demographics

2007 ABS release

Griffith City Council	15826
Beelbangara	305
Benerembah	193
Bilbul village & Farms	1055
Hanwood	868
Lake Wyangan	1327
Nericon	116
Tharbogang	738
Willbriggie	376
Yenda	1516
Yoogali	1481

Griffith local government area has 23,801. This represents no rise in population.

2001 ABS data

11. Issues and Challenges

Community consultation demonstrated that the main issues for arts and cultural practice in Griffith were:

- Lack of funding
- Not being part of a RADO network
- The retention of professional staff
- Bullying and anti-social behaviour
- Divergence of community groups and the subsequent difficulty in coordinating arts and cultural practice
- Geographical isolation
- Rapid increase in culturally diverse settlements
- Limited broadband access
- Scarcity of water and the potential economic impact this may have
- Lack of university and training options in Griffith and the subsequent 'brain drain'.

12. Introduction to Action Plan

Strategy 1- Support the Community Action Plan (CAP)

As the main strategic document for guiding social and community planning in the coming years, the CAP and its implementation require much work and support. The Cultural Plan will provide support to the CAP by having shared outcomes. Its methods of achieving these outcomes are through arts and cultural practice.

How does the Cultural Plan support the CAP?

The Cultural Plan supports the (CAP) by addressing the issues through Arts and cultural activity. For example, one of the main priorities of the CAP is to improve Health services and facilities. This was determined after community consultation. Many residents were concerned about health in Griffith. The Cultural Plan can support this objective by improving

arts in public spaces, thereby making them more attractive. Drawing people to open public spaces encourages healthier lifestyle practices such as fresh air, exercise, and involvement in the community. In addition, art can be used as an engagement tool to promote health. For example, young people can be involved in the designing of promotional material which addresses diabetes.

Another priority of the CAP is Crime prevention. Arts and cultural practice has long been recognized as powerful way to engage people (offenders, victims, people at risk and communities as a whole) and begin to address the issues behind crime, such as antisocial behaviour.

Breaking New Ground is an arts based project that works with high school students to learn about acceptance, respect, peace, diversity and community connectedness. Such a program assists in underlying issues that can lead to crime and antisocial behaviour. Partnership projects, like those delivered by Big hART, Lead On, CRYT, KOOL and others in Griffith use art as a connection point when working with young people. It is often a way build relationships and provide mentorship driven by the process of arts practice not just the resulting artworks. Ultimately the outcome is more than simply artwork – it encourages behavioral change; increasing self and community respect; providing greater options and the reduced risk of participants becoming involved in criminal activities.

Gaps and challenges

The work which the cultural plan inspires is done largely through project based, one-off projects, for example, Breaking New Ground, Big hART, CRYT and the Theatre Access Program. These projects are funded through non-ongoing funding opportunities, and thus have a limited time frame. Applying for funding is very competitive, and as such there may be periods of low project activity.

Strategy 2- Increase participation in the Arts- both in production, audience development and infrastructure

The increase in production of art in Griffith can take a variety of forms. It may be an increase in locally produced art, such as through the Theatre Access Program, or exhibitions from local artists at the gallery. It may be an increase in the importation of art produced elsewhere, such as the entrepreneurial season of shows at the theatre, or the world music acts at La Festa. It can be an increase in amateur art, such as amateur performing groups, or professional production of art, such as artist residencies through TAP. Community consultation demonstrated that an increase in all these types of art was desired. It is important to foster the increase of all these types of art production, all the while clearly distinguishing between them.

Audience development involves increased audience participation, and a better audience understanding of the meanings and value of art. Audience development has positive implications for the community. A population engaged in arts and cultural practice is more likely to be happy, healthy and peaceful. The more people involved as an audience, the more widespread the benefits.

A strategy of audience development includes attracting new audiences beyond traditional arts audiences. This includes groups like CALD communities, men, young people, and aboriginal people. While as individuals or as groups they may have an interest, the facilities and projects must ensure they are relevant and meaningful so that these audiences can increase their participation in arts and cultural activities locally.

To encourage increased involvement in the arts, infrastructure must be maintained and improved. In Griffith specifically, the priorities are a new Gallery, the maintenance of existing facilities, and an upgrade of Pioneer Park.

Gaps and challenges

A challenge exists in fostering audience development. There are issues in appealing to a diverse audience without disengaging some audiences. For example, some gallery exhibitions may challenge classical art forms and disengage members of the audience. But these exhibitions are valuable and attract audiences as diverse as our population.

Strategy 3- Participate in larger Regional Arts strategy

Why is it important to be in a regional arts network?

The benefits of joining a regional arts network are:

- membership and access to a highly regarded resource and network and all it has to offer;
- equitable and appropriate resourcing. Our LGA has incredible diversity, and along side that sits issues relating to culturally appropriate engagement. This largely is required to be face to face to ensure meaningful and sustainable engagement. This model will get community and Council on side in a way it is ongoing and set up for success;
- build the capacity of local arts and cultural communities;
- Become recognised as a vital contributor to the arts and cultural fabric in NSW

Arts networks that council is currently involved in

- Big *h*ART
- Incorporation of NSW and ACT Performing Arts Centres (INAPAC)
- Western Riverina Community Library
- Museums and Galleries NSW
- Museums Australia
- Australian Performance Art Centres Association
- Heritage Officer
- Murray Riverina Museum professional network
- Foundation for Young Australians

Networks we are not in

- Regional Arts Development

In February 2007, the Australia Street Company, social and cultural planners and management consultants were commissioned to carry out a review, the Regional Arts Network membership study. The recommendations included that council actively communicate with RANSW in relation to its regional arts development networking options, to decide its preferred option for regional networks, and to take the lead in collaborating in the development of regional CCD projects and programs with an Indigenous arts and cultural development focus. This study and the recommendation will be reviewed with an update for future adoption by Griffith City Council. This has happened due to the priority of the CAP process.

Council has since decided that its preferred option would be for Regional Arts NSW and Ministry for the Arts to realign RADO boundaries and create a new RADO region with Griffith as the hub. Other LGA's who could be involved in such a region could include Leeton and Narrandera Shire.

13. Arts and Cultural Strategy

What needs to be done – By capitalising on existing strengths and professionalism, Griffith coordinates art and culture and allows it to proliferate in a way which supports community well-being and develops a model for regional best practice

Link to State Plan: R4 – Increased participation and integration in community activities

E8 – More people using parks, sporting and recreational facilities and participating in the arts and cultural activity

R3 – Reduced levels of antisocial behaviour

F1 – Improved health and education for Aboriginal people

P2 – Maintain and invest in infrastructure

P7 – Better access to training in rural and regional NSW to support local economies

P8 – Increase business investment in rural and regional NSW

<p>Strategies to Achieve the Goals</p>	<p>getting it done (Actions)</p>	<p>KPI – how we know when there is success</p>
<p>1 Support the delivery and implementation of the Community Action Plan through an Arts and Cultural Strategy</p>	<p>37.1 Social enhancement programs are offered to schools, to be funded & delivered by external agencies. For e.g. Picture My World and Breaking New Ground projects 37.2 Promote Arts and Culture as central to the positive settlement of emerging communities 37.3 Support as a priority the delivery of arts projects for children and young people 37.4 Program culturally appropriate services and facilities 37.5 Develop a strategy and implementation plan for increased public and community arts opportunities with an initial benchmark of 2 public or community art projects per year 37.6 Ensure arts activities are an integral part in the development of a youth centre 37.7 Deliver at least 1 Aboriginal arts / cultural program per year 37.8 Provide art projects at art galleries and youth centre 37.9 Support increased Aboriginal engagement in education using Aboriginal Arts and Culture as an engagement tool 37.10 Consider arts and cultural practice in the design and or reinvigorator of public spaces, for e.g. through policy development</p>	<p>Griffith's artistic and cultural identity and diversity is known and celebrated locally and further a field. Griffith is a recognised hub for arts and cultural best practice and innovation</p> <ul style="list-style-type: none"> • decrease in anti-social behaviour • increase and increasingly diverse audiences are participating in arts and cultural events and facilities • development of Art Gallery • join the regional arts network

<p>2 Increase participation in the Arts- in production, audience development and infrastructure</p>	<p>38.1 Implement Regional Arts Strategy Study with particular emphasis on equitable inclusion into the Regional Arts Development network 38.2 Ensure access to the arts for diverse, new and emerging communities through audience development initiatives 38.3 Promote and support Griffith's social and cultural infrastructure and services 38.4 Promote the arts and culture as a part of developing emerging creative economies in our region 38.5 Implement and review the findings of the strategic review of the Gallery 38.6 Include the development of a new art gallery as part of GCC 10 year capital expense program 38.7 Create new and professional Theatre product 38.8 Programming support for visual artists through the art gallery 38.9 Develop arts projects focusing on the stories of asylum seekers 38.10 Develop WYK II 38.11 Implement Stage 2 & 3 of migration heritage project 38.12 Develop an arts register / directory 38.13 Develop and endorse strategic plans for all cultural facilities which have links to the Cultural Plan., Community Action Plan and council corporate planning regime</p>	
<p>3 Participate in larger Regional Arts strategy</p>	<p>39.1 Adopt Australia Street Company's report into Regional Arts 39.2 Implement the Regional Arts study 39.3 Include Regional Arts as a resource sharing issue at a ROC level 39.4 Engage in discussions with Leeton and Narrandera regarding opportunities to participate in the Regional Arts network 39.5 Continue discussions with Regional Arts NSW and Arts NSW in relation to the strategy 39.6 Maintain and grow standards of existing arts and cultural facilities so that they continue to be relevant and accessible at a Regional level 39.7 Participate in the state review of library services to ensure equitable access to libraries through the WRCL network</p>	



© Griffith City Council September 2007
1 Benerambah Street, Griffith, NSW 2680
PO Box 485, Griffith, NSW 2680
Telephone: (02) 6962 8100
Fax: (02) 6962 7161
Website: www.griffith.nsw.gov.au

Edited and compiled by Griffith City Council